

# MONTHLY MEMBERSHIP PROGRESS REPORT

LOCATION INDIA

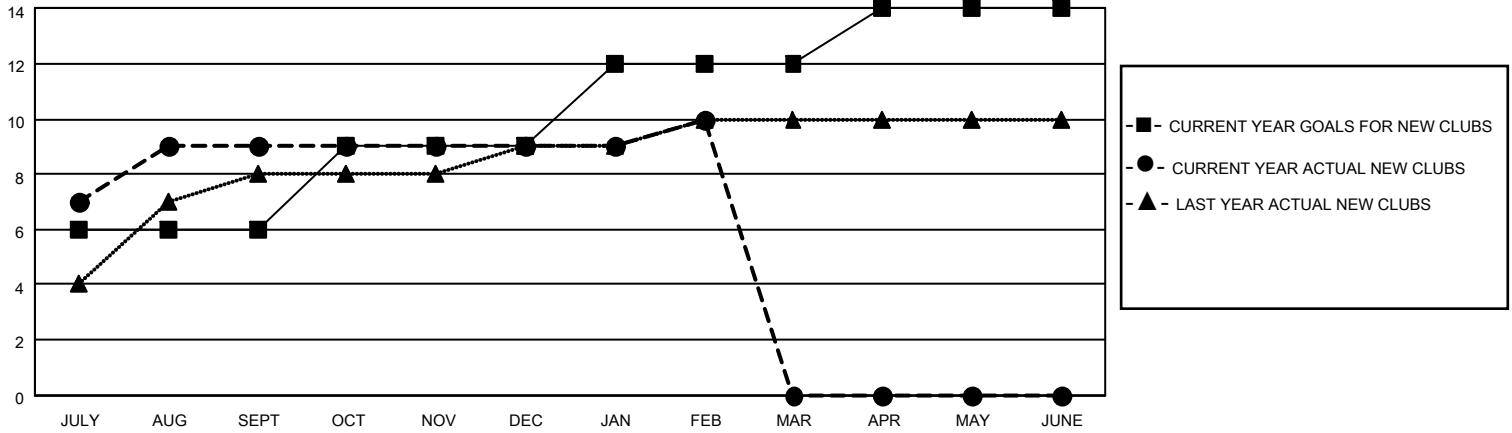
District 3233E1

Results as of: 2/28/2021

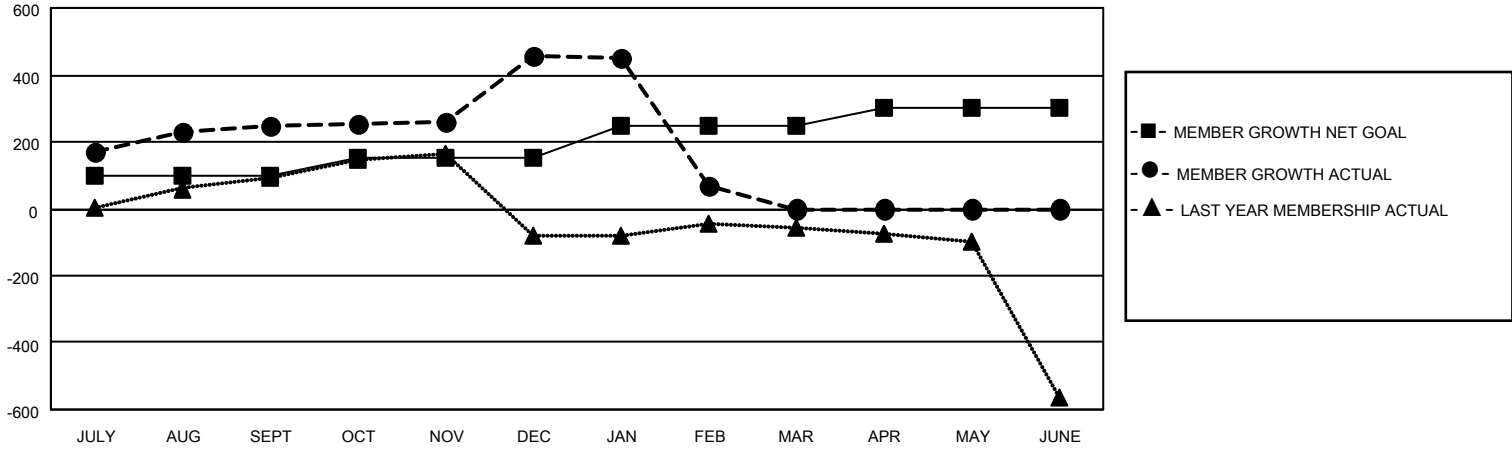
Clubs			
RESULTS FOR 2020-2021			
QUARTER	NEW CLUB GOAL	NEW CLUBS	DROPPED CLUBS
JULY/AUG/SEPT	6	9	0
OCT/NOV/DEC	3	0	0
JAN/FEB/MAR	3	1	25
APR/MAY/JUNE	2	0	0

Members			
RESULTS FOR 2020-2021			
QUARTER	MEMBER GROWTH NET GOAL	MEMBER GROWTH ACTUAL	DROPPED MEMBERS ACTUAL (including transfers)
JULY/AUG/SEPT	100	368	114
OCT/NOV/DEC	50	404	192
JAN/FEB/MAR	100	41	428
APR/MAY/JUNE	50	0	0

**GOALS AND ACTUAL NEW CLUBS CUMULATIVE**



**GOALS AND ACTUAL MEMBERS CUMULATIVE**



**DROPPED CLUBS: 25**

**88 CLUBS OF 189 ADDED 1 OR MORE NEW MEMBERS**

**GENDER DISTRIBUTION**

MALE            3,837 (71.10%)  
 FEMALE        1,560 (28.90%)

**DROPPED MEMBERS**

[CLICK HERE FOR CUMULATIVE MEMBERSHIP DATA](#)

DECEASED	11
CLUB CANCELLED	394
OTHER	329
<b>TOTAL</b>	<b>734</b>

TOTAL FAMILY UNIT MEMBERS	2,437
FAMILY MEMBERS PAYING HALF DUES	1,339